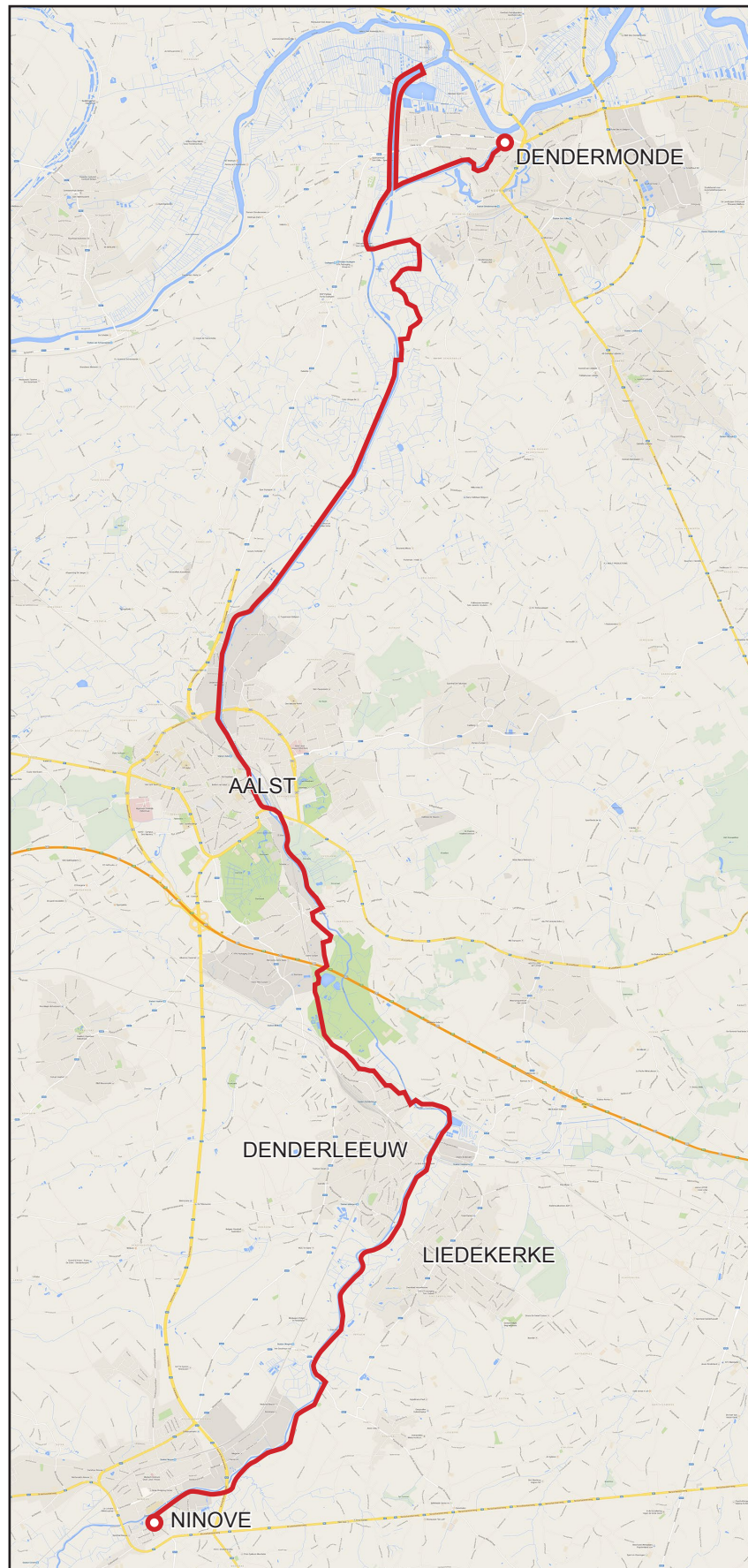
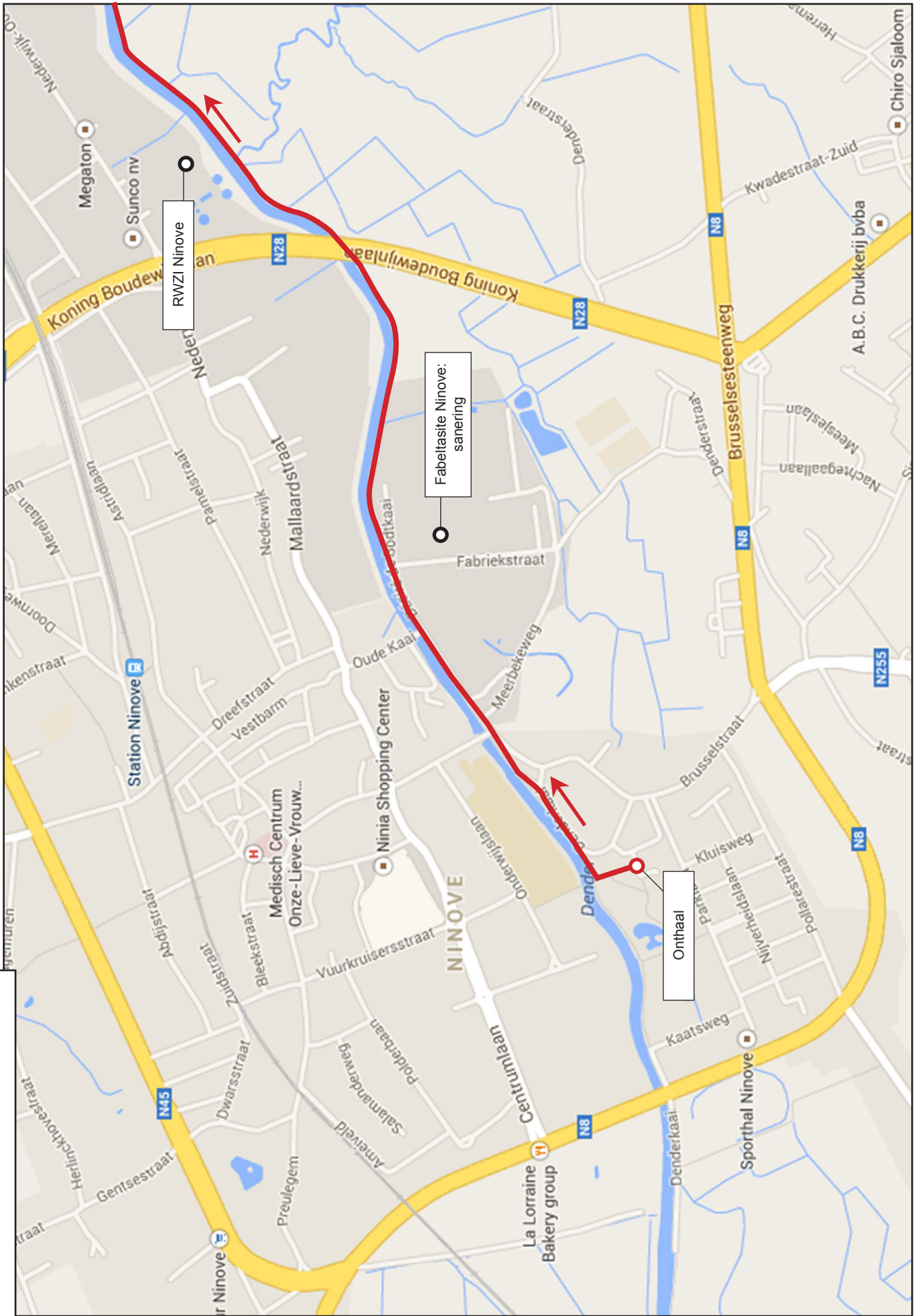


## DINSDAG 8 JULI 2014

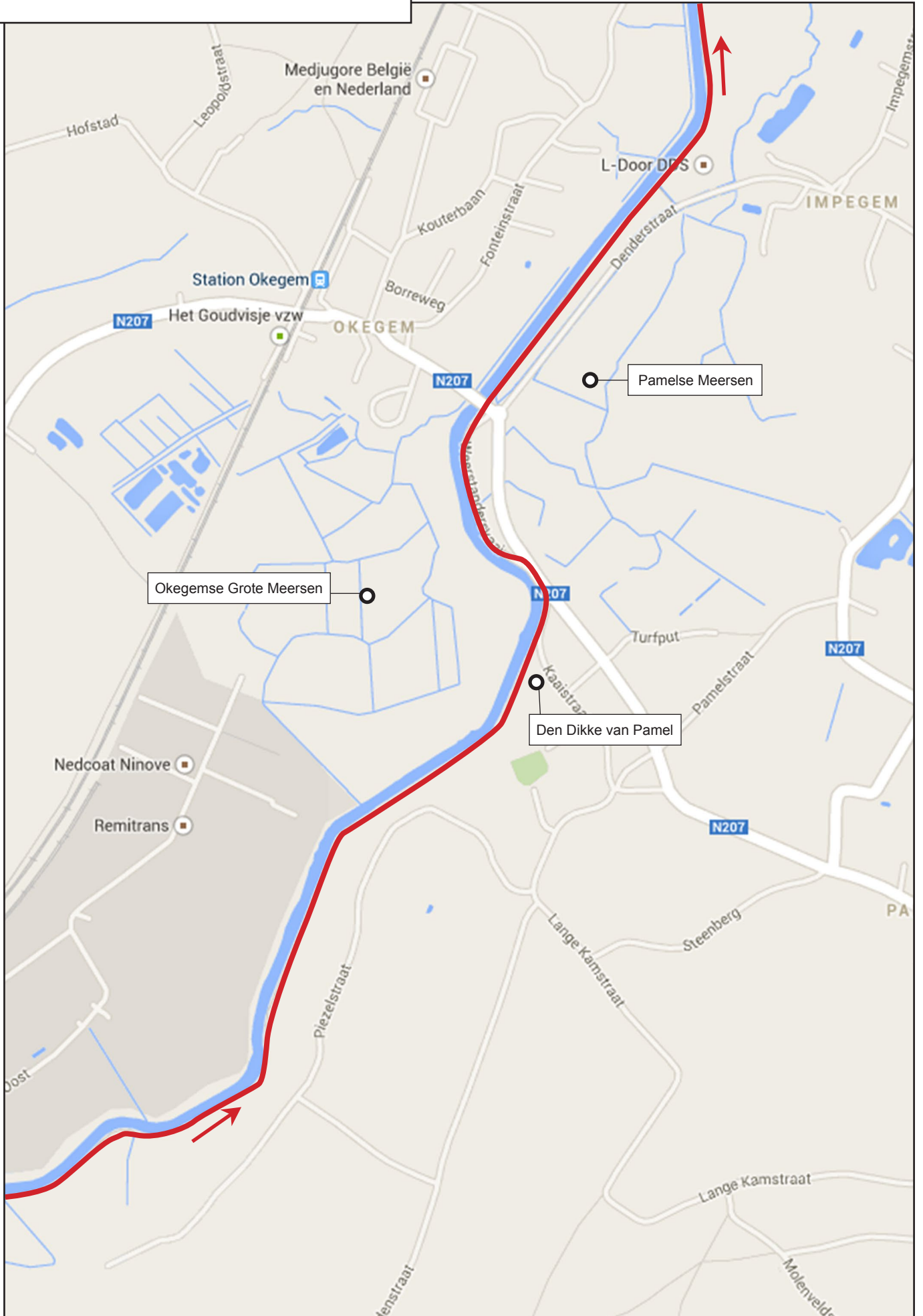
Verkenningstocht naar de monding van de Dender in de Schelde:  
van Ninove, via Liedekerke, Denderleeuw, Aalst en Dendermonde  
(30 km - met de fiets)

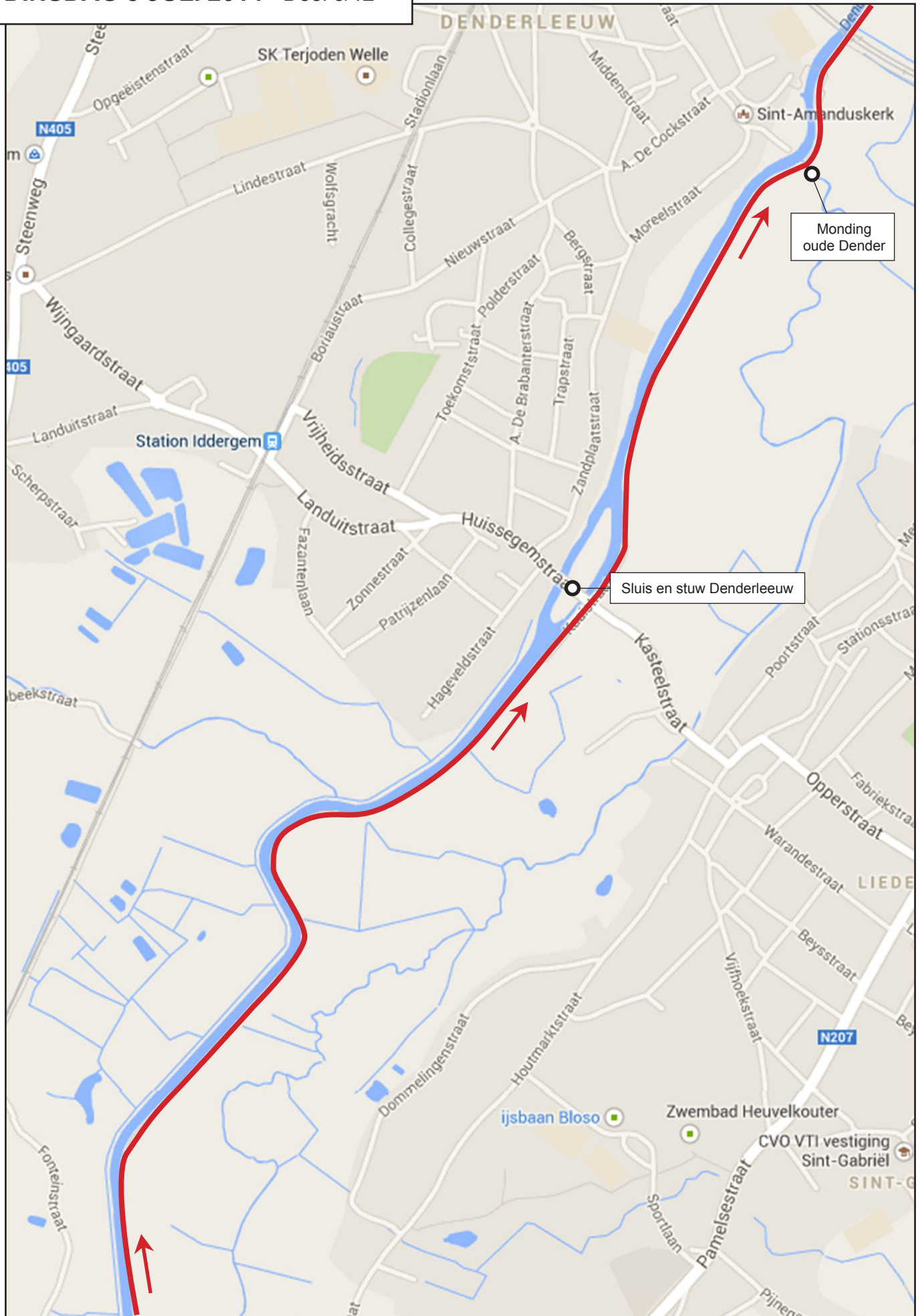


DINSDAG 8 JULI 2014 - Deel 1/12



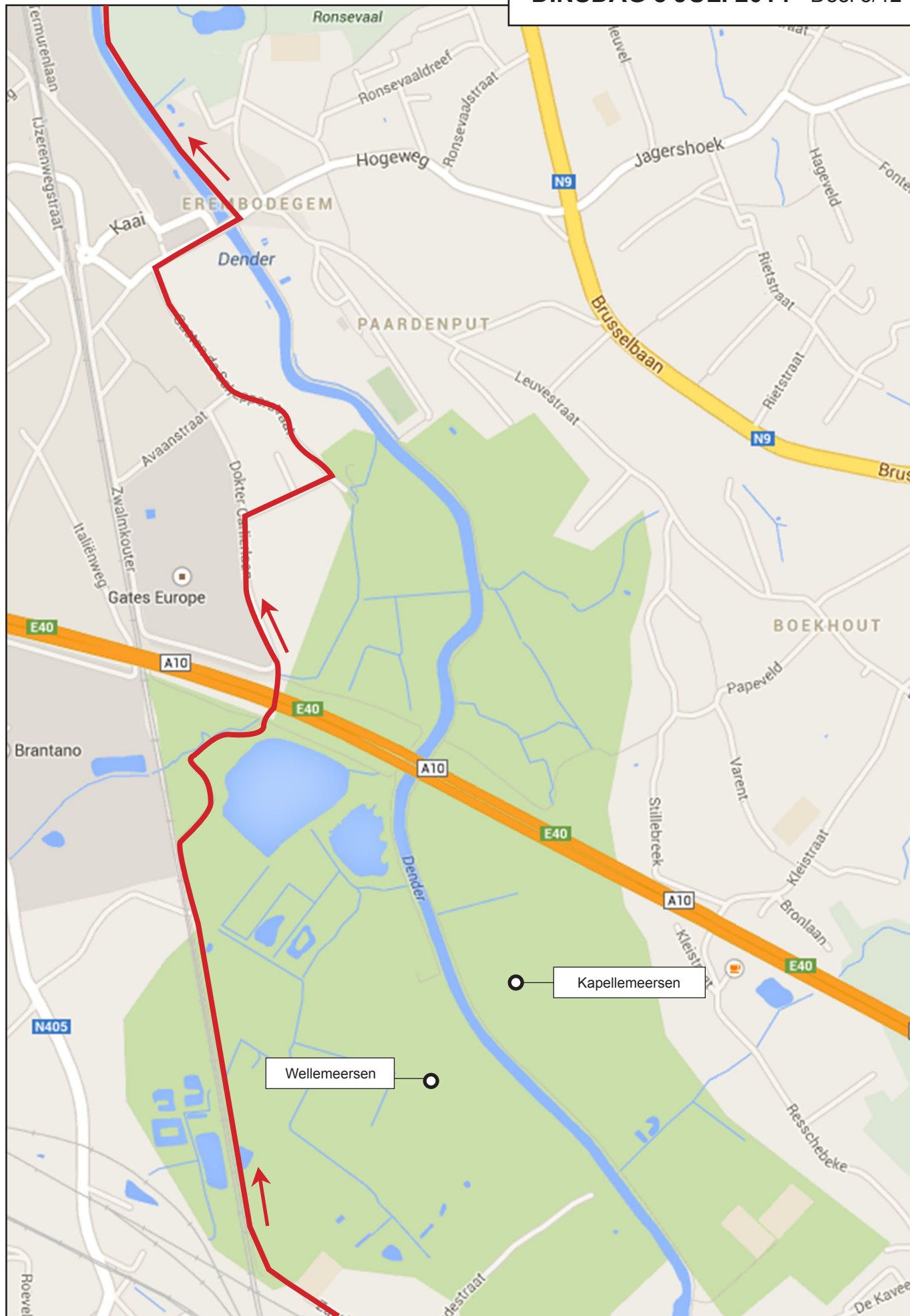






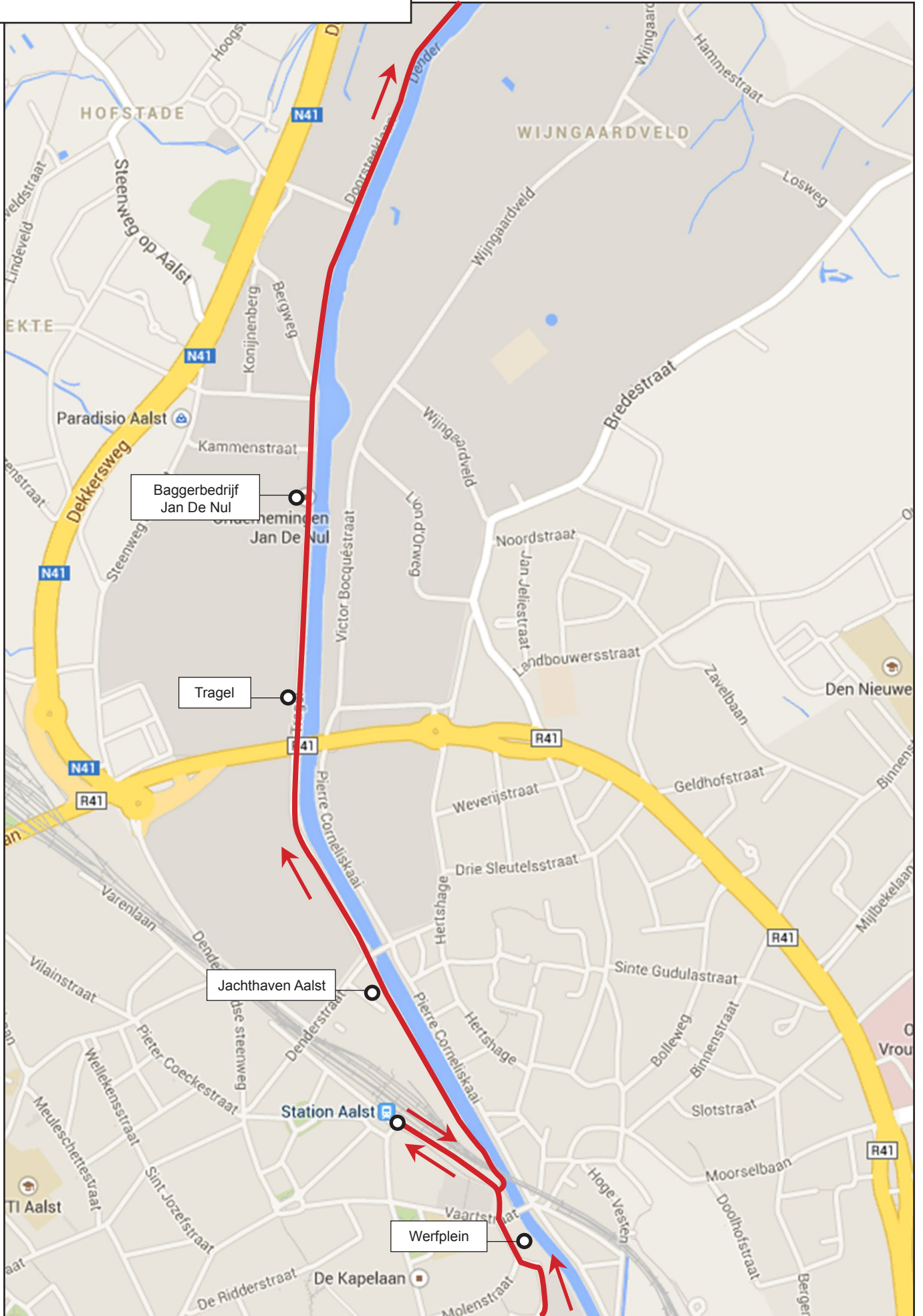






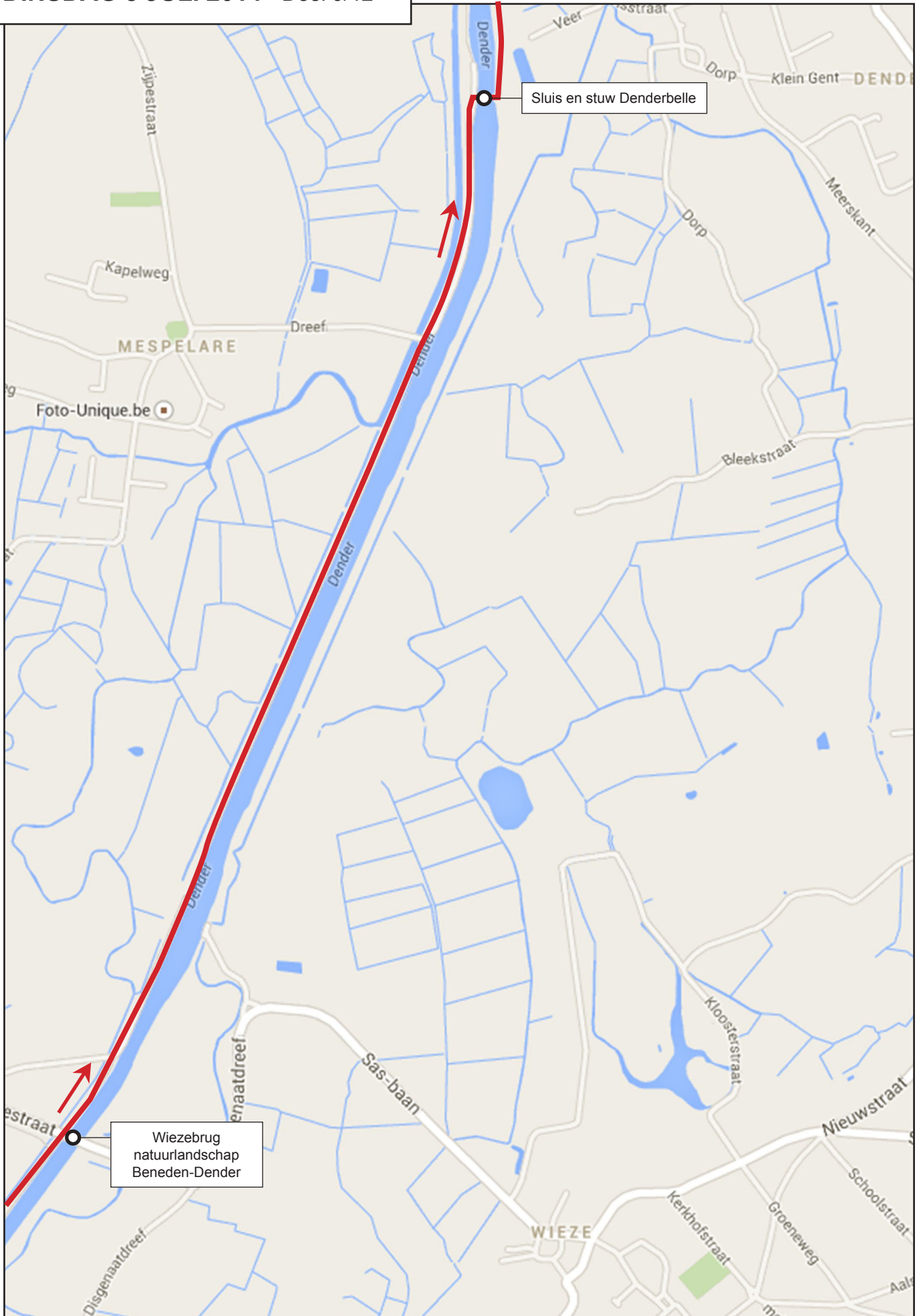




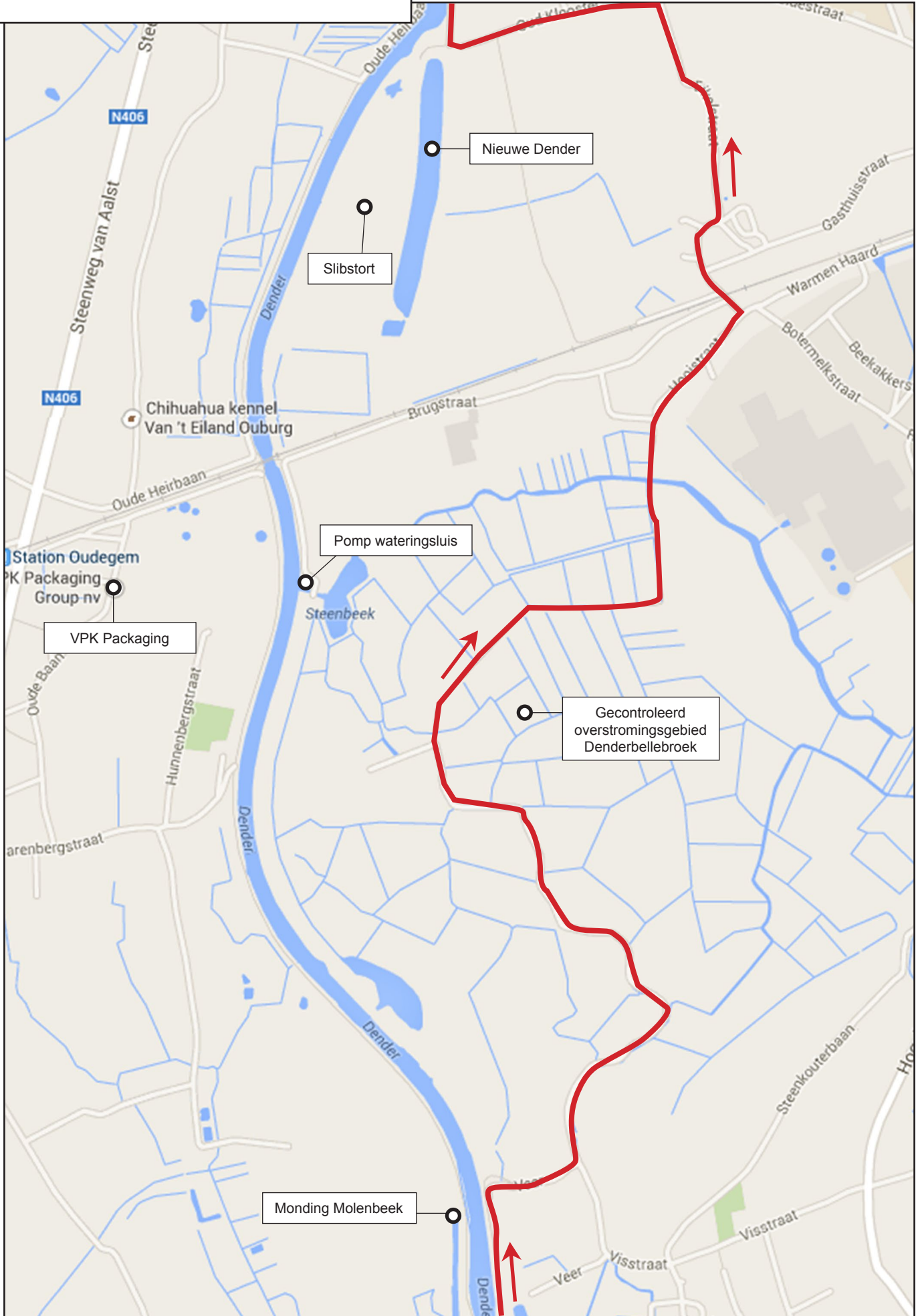


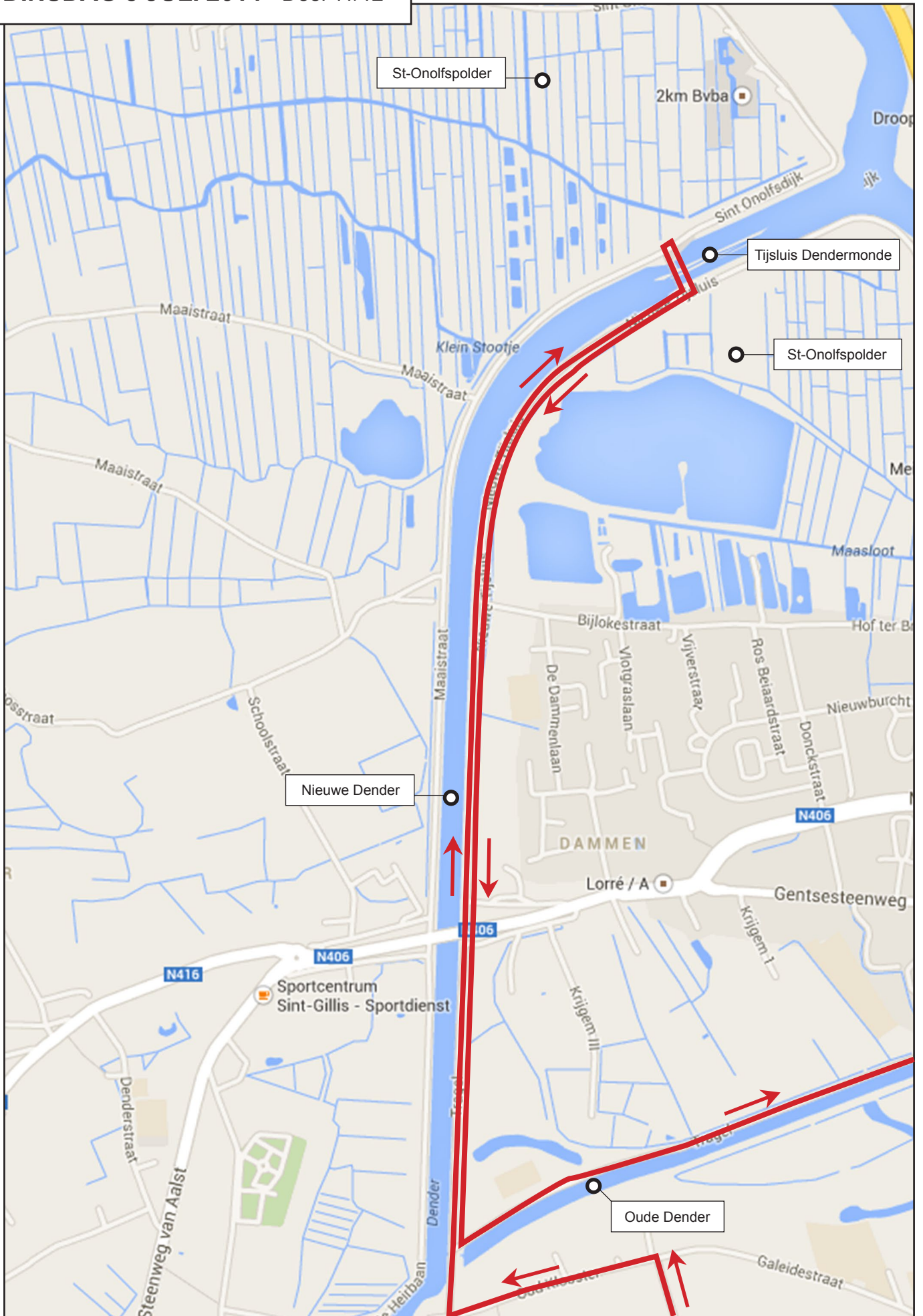














DINSDAG 8 JULI 2014 - Deel 12/12

